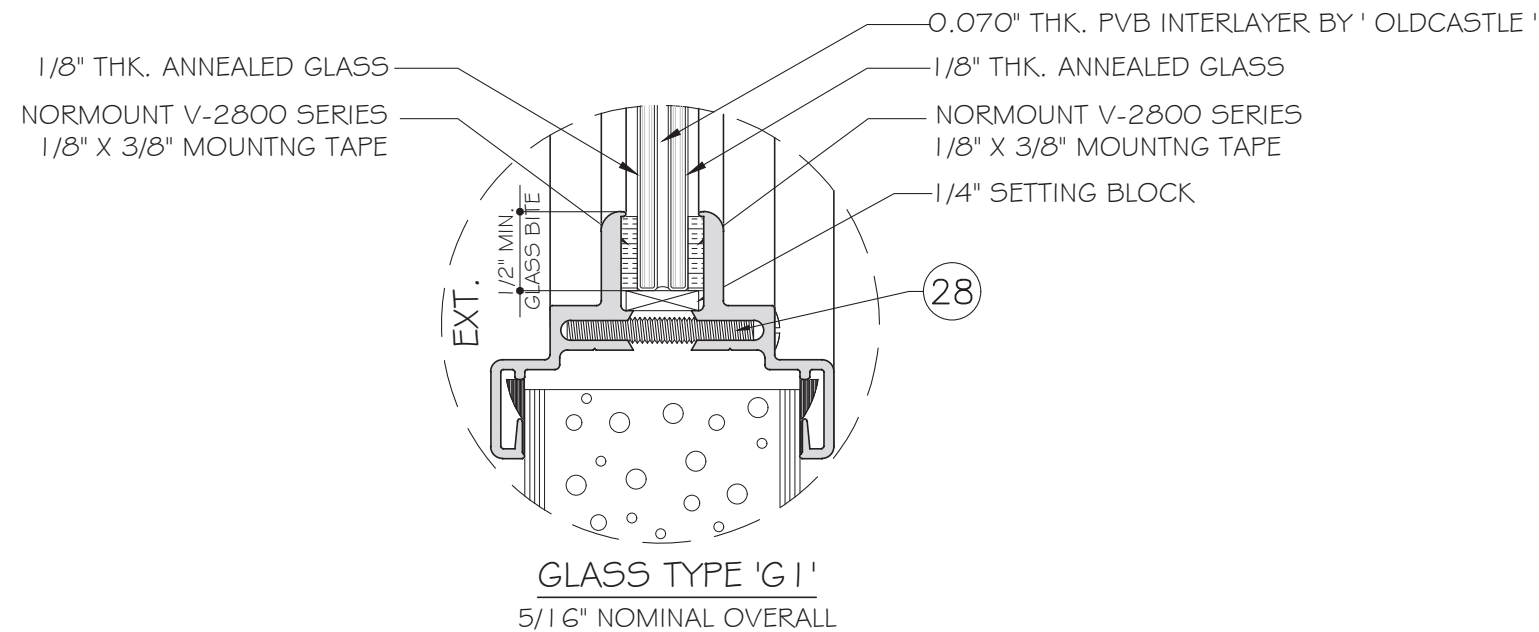


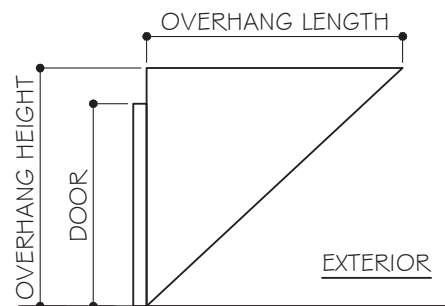
SL-17 ALUMINUM OUTSWING ENTRANCE DOORS LARGE MISSILE IMPACT (L.M.I.) IMPACT LEVEL "D"



GENERAL NOTES:

- THIS PRODUCT HAS BEEN DESIGNED AND TESTED TO COMPLY WITH THE REQUIREMENTS OF THE FLORIDA BUILDING CODE 7TH EDITION (2020) /8TH EDITION (2023) INCLUDING HIGH VELOCITY HURRICANE ZONE (HVHZ).

- DOOR IS DESIGNED TO BE USED AT LARGE MISSILE AREA. SHUTTER IS NO REQUIRED.
DOOR NOT APPROVED FOR WATER INFILTRATION TO BE PROTECTED BY OVERHANG OR CANOPY.



$$OH \text{ RATIO} = \frac{\text{OVERHANG LENGTH}}{\text{OVERHANG HEIGHT}}$$

- ANCHORS SHALL BE AS LISTED, SPACED AS SHOWN ON DETAILS. ANCHORS EMBEDMENT TO BASE MATERIAL SHALL BE BEYOND WALL DRESSING OR STUCCO.

- ANCHORING OR LOADING CONDITIONS NOT SHOWN IN THESE DETAILS ARE NOT PART OF THIS APPROVAL.

- MATERIALS INCLUDING BUT NOT LIMITED TO STEEL/METAL SCREWS THAT COME INTO CONTACT WITH OTHER DISSIMILAR MATERIALS SHALL MEET THE REQUIREMENTS OF THE FLORIDA BUILDING CODE 7TH EDITION (2020) / 8TH EDITION (2023) SECTION AS APPLICABLE.

- METAL STRUCTURES BY OTHERS TO BE DESIGNED TO SUPPORT THE LOADS IMPOSED BY THIS GLAZING SYSTEM AND TO TRANSFER SUCH LOADS TO THE BUILDING MAIN STRUCTURE.

- ULTIMATE LOAD OBTAINED FROM ASCE 7-16/ ASCE 7-22, MULTIPLY BY 0.6 SHALL BE LESS THAN OR EQUAL TO MAX. DESIGN LOAD IN THIS DOCUMENT. THE DESIGN LOADS SHOWN IN THIS DOCUMENT ARE ALLOWABLE DESIGN LOADS.

- MANUFACTURER'S LABEL SHALL BE LOCATED ON A READILY VISIBLE LOCATION IN ACCORDANCE WITH SECTION 1709.9.3 OF FLORIDA BUILDING CODE LABELING TO COMPLY WITH SECTION 1709.9.2.

NOTE:
GLASS COMPLIES WITH ASTM E 1300-09
(3 SEC. GUSTS)

INSTRUCTIONS:
USE CHARTS AS FOLLOWS.

STEP 1: DETERMINE DESIGN WIND LOAD REQUIREMENTS BASED ON WIND VELOCITY, BLDG. HEIGHT, WIND ZONE USING APPLICABLE ASCE 7-22 STANDARD.

STEP 2: SEE COVER FOR GLASS OPTIONS.

STEP 3: SEE SHEET E 1 FOR TYPICAL ELEVATION AND APPROVED DESIGN LOAD
SEE SHEET HW 1 FOR HARDWARE OPTION.

STEP 4: SEE ANCHOR TYPE ON SHEET A 1.
SEE SHEET E 1 FOR ANCHOR SPACING.

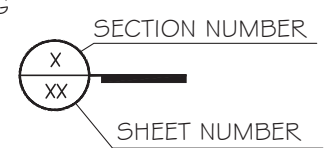
LIMITATIONS OF USE
THIS PRODUCT EVALUATION DOCUMENT (P.E.D.) PREPARED BY THIS ENGINEER IS GENERIC AND DOES NOT PROVIDE INFORMATION FOR A SITE SPECIFIC PROJECT. I.E. WHERE THE SITE CONDITIONS DEVIATE FROM THE P.E.D.
CONTRACTOR TO BE RESPONSIBLE FOR THE SELECTION, PURCHASE AND INSTALLATION OF THIS PRODUCT BASED ON THIS PRODUCT EVALUATION PROVIDED HE/SHE DOES NOT DEVIATE FROM THE CONDITIONS DETAILED ON THIS DOCUMENT.
THIS PRODUCT EVALUATION DOCUMENT WILL BE CONSIDERED INVALID IF ALTERED BY ANY MEANS.
SITE SPECIFIC PROJECTS SHALL BE PREPARED BY A FLORIDA REGISTERED ENGINEER OR ARCHITECT WHICH WILL BECOME THE ENGINEER OF RECORD (E.O.R.) FOR THE PROJECT AND WHO WILL BE RESPONSIBLE FOR THE PROPER USE OF THE P.E.D.
THIS P.E.D. SHALL BEAR THE DATE AND ORIGINAL SEAL AND SIGNATURE OF THE PROFESSIONAL ENGINEER OF RECORD THAT PREPARED IT.

FLORIDA APPROVAL:
FL#13789.1

YIRGC WANG, P.E.
FLORIDA REGISTRATION
FL #55983
C.A. 85982
No. 8528677
August 11th, 2023

ABBREVIATIONS AND SYMBOLS

- D.L.O. - DAYLIGHT OPENING
- F.H. - FRAME HEIGHT
- F.W. - FRAME WIDTH
- W/ - WITH
- W/O - WITHOUT
- O.C. - ON CENTER
- MAX. - MAXIMUM



| NO. | DATE | DESCRIPTION |
|-----|----------|-------------|
| R3 | 08.11.23 | 2023 FBC |

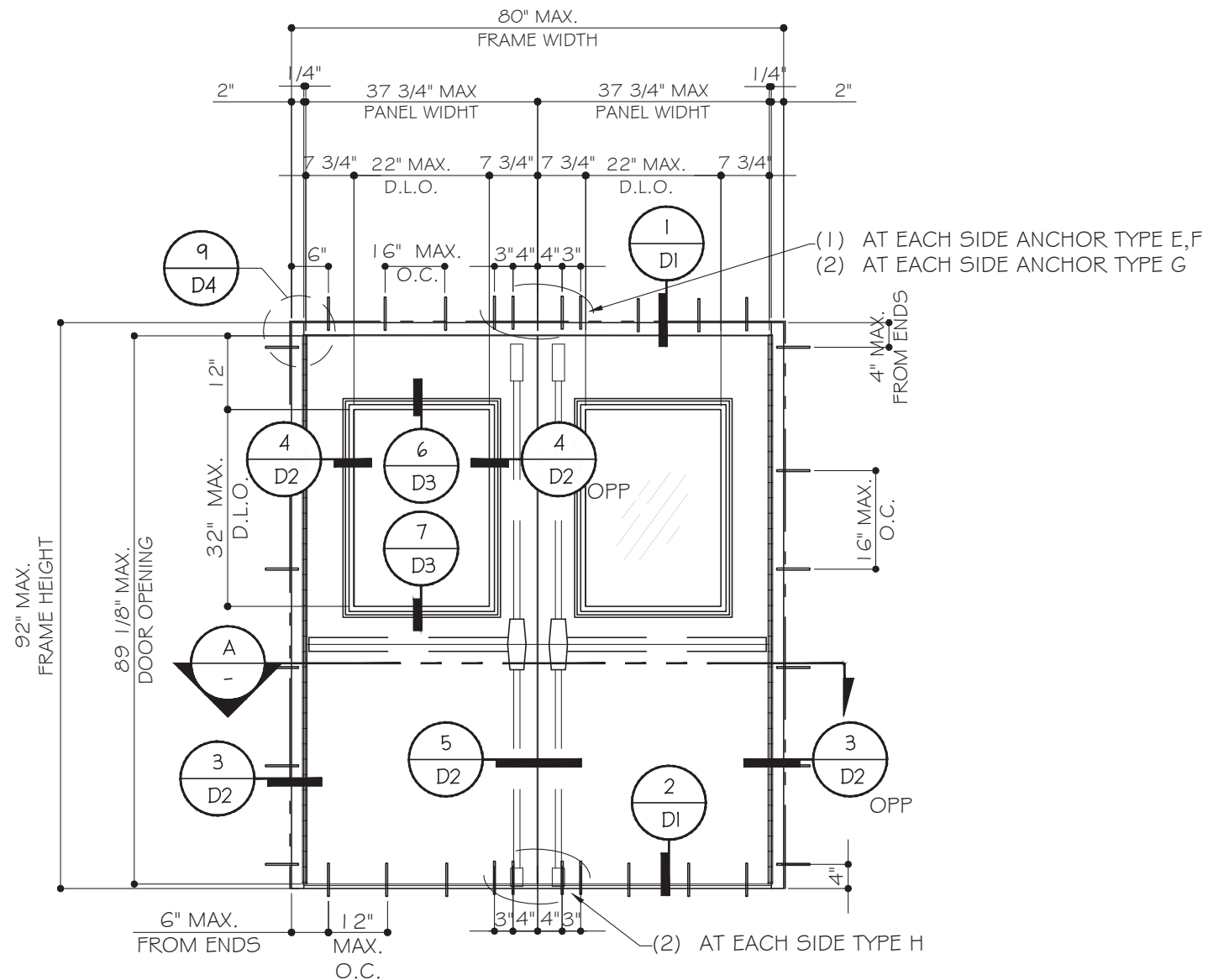
MCY ENGINEERING, INC.
GLAZING CONSULTANTS
12781 MIRAMAR PARKWAY #301
MIRAMAR, FL 33027
P: 305.271.0117
www.MCYEngineering.com mcy@mcyengineering.com

ALUMINUM FRAME OUTSWING DOORS
SPECIAL-LITE, INC.
860 SOUTH WILLIAMS STREET
P.O. BOX 6
DECATUR, MI 49045
WWW.SPECIAL-LITE.COM

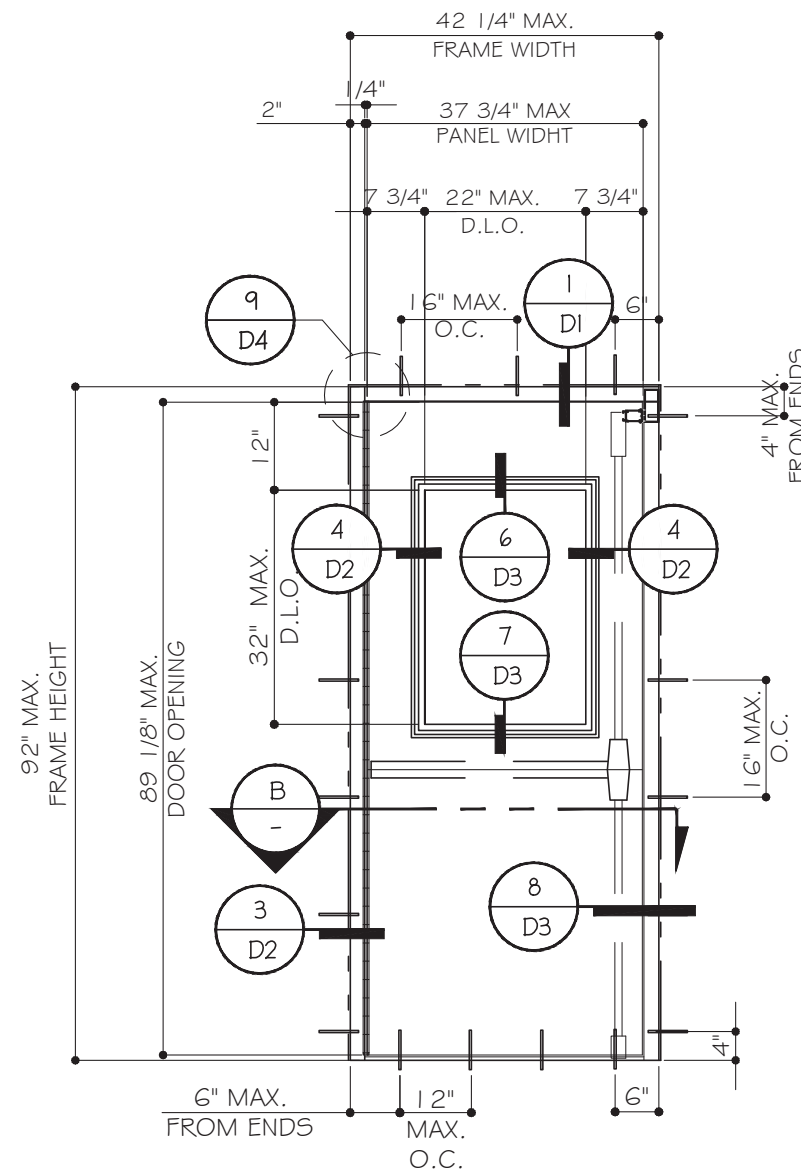
Special-Lite
Doors with more life.

| |
|----------------------|
| AD20-31 |
| DATE: 08.11.23 |
| SCALE: AS SHOWN |
| DRAWN: James |
| DRAWING NO.: AD20-31 |

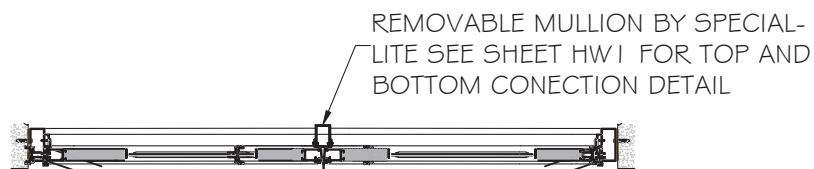
SHEET TITLE
COVER
1 OF 10



TYPICAL EXTERIOR ELEVATION (XX)



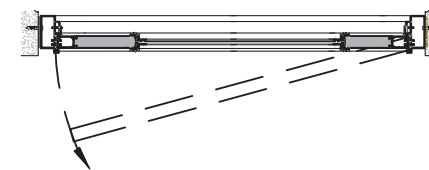
TYPICAL EXTERIOR ELEVATION (X)



SECTION A

| |
|---|
| DESIGN LOADS (FOR SIZES SHOWN OR SMALLER) AS PERMITTED BY FBC |
| NOT APPROVED FOR WATER INFILTRATION |
| + 65.0 PSF - 65.0 PSF |

FOR LOCK OPTIONS
SEE SHEET HW1



SECTION B

| |
|---|
| DESIGN LOADS (FOR SIZES SHOWN OR SMALLER) AS PERMITTED BY FBC |
| WITH OR WITHOUT WATER INFILTRATION |
| + 65.0 PSF - 65.0 PSF |

FLORIDA APPROVAL:
FL#13789.1

YING WANG, P.E.
FLORIDA REGISTRATION
FL #55983
C.A. 85983

August 11th, 2023

| REVISIONS | NO. | DATE | DESCRIPTION |
|-----------|-----|----------|-------------|
| | R3 | 08.11.23 | 2023 FBC |

MCY ENGINEERING, INC.
GLAZING CONSULTANTS

12781 MIRAMAR PARKWAY #301
MIRAMAR, FL 33027
P: 305.271.0117
www.MCYEngineering.com mcy@mcyengineering.com

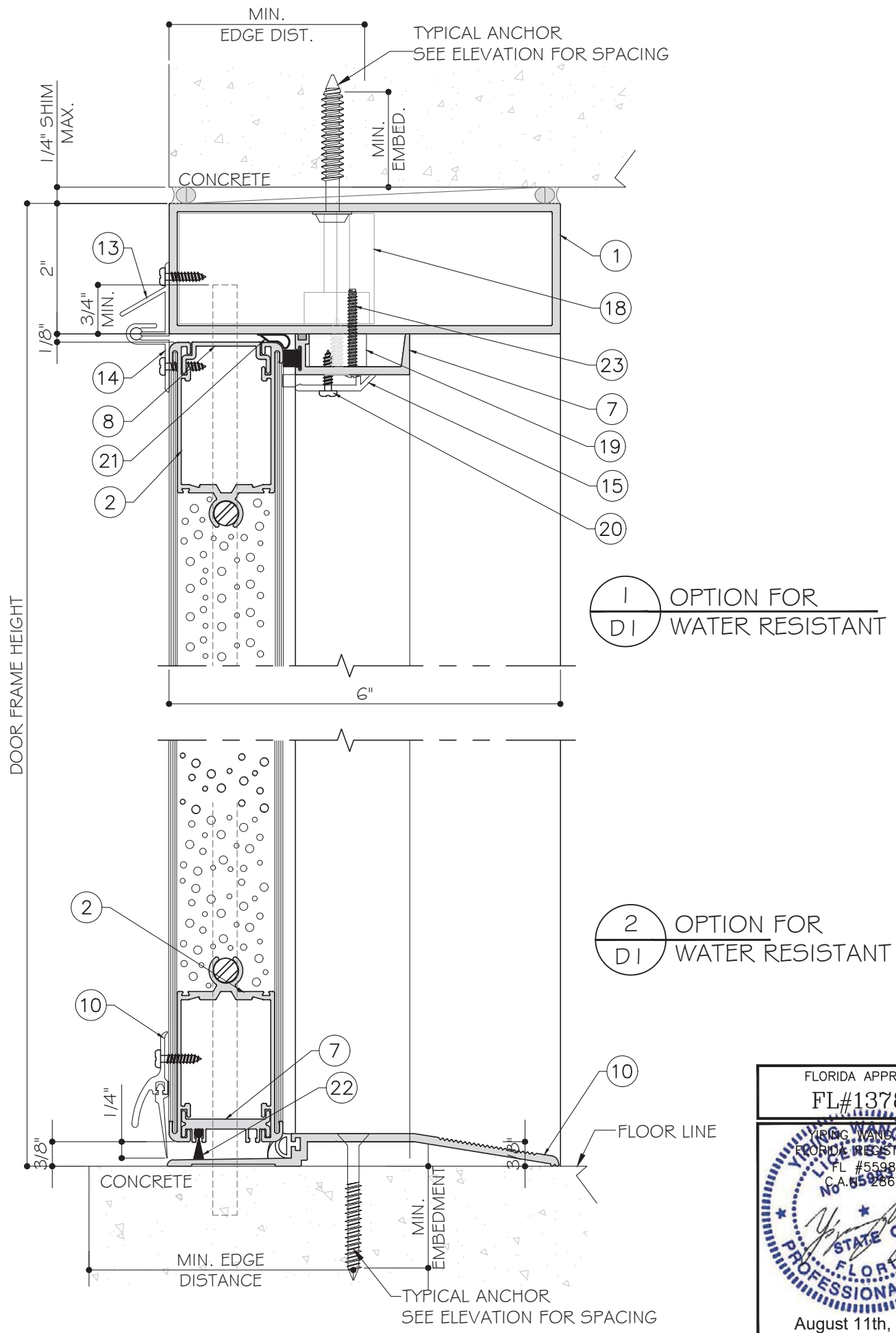
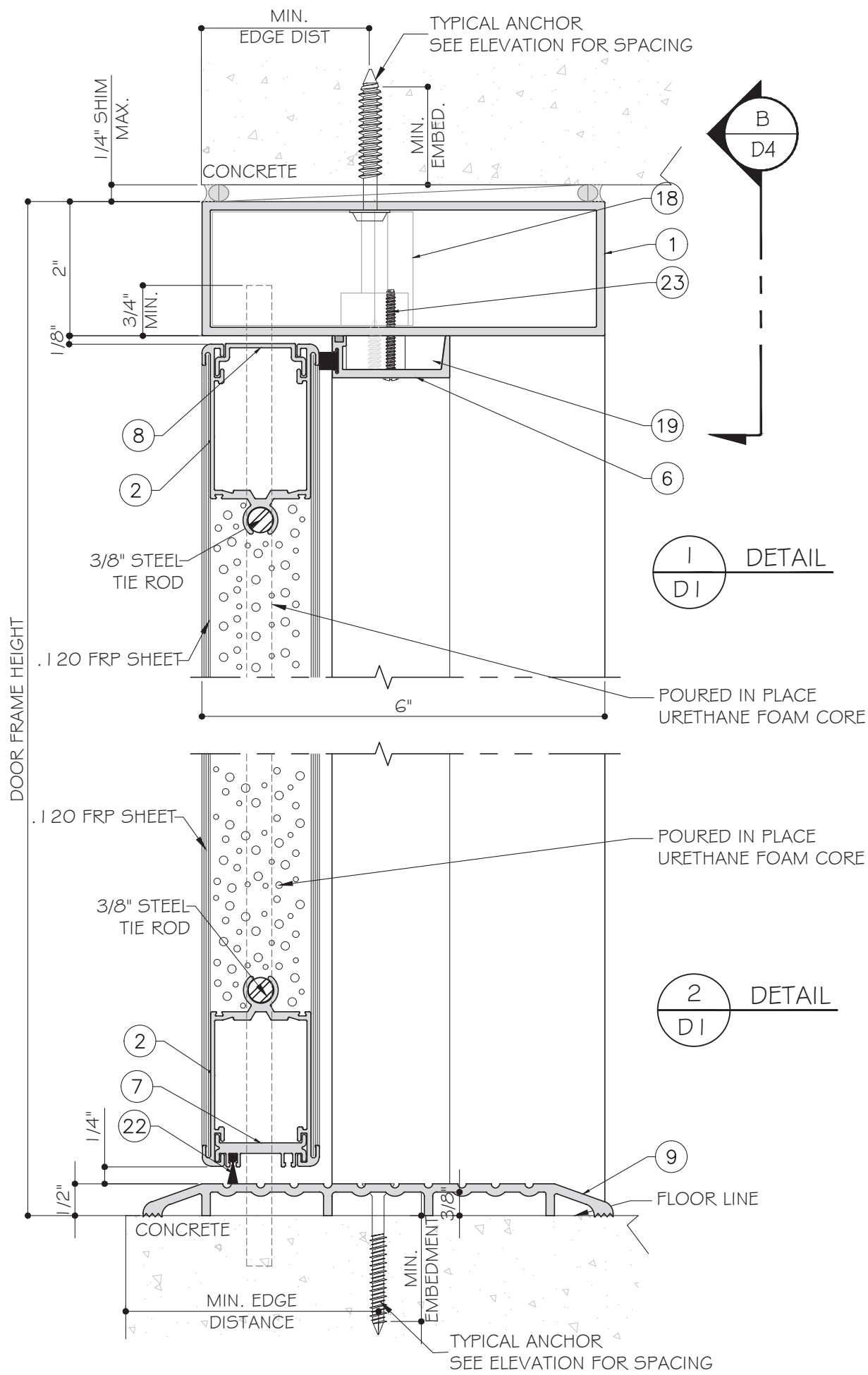
ALUMINUM FRAME OUTSWINGING DOORS

SPECIAL-LITE, INC.
860 SOUTH WILLIAMS STREET
P.O. BOX 6
DECATUR, MI 49045
WWW.SPECIAL-LITE.COM



| |
|----------------------|
| AD20-31 |
| DATE: 08.11.23 |
| SCALE: AS SHOWN |
| DRAWN: James |
| DRAWING NO.: AD20-31 |

SHEET TITLE
E1



FLORIDA APPROVAL:
 FL#13789.1
 YIRGC WANG, P.E.
 FLORIDA REGISTRATION NO. 855983
 CALIFORNIA REGISTRATION NO. 855983
 August 11th, 2023

| REVISIONS | NO. | DATE | DESCRIPTION |
|-----------|-----|----------|-------------|
| | R3 | 08.11.23 | 2023 FBC |

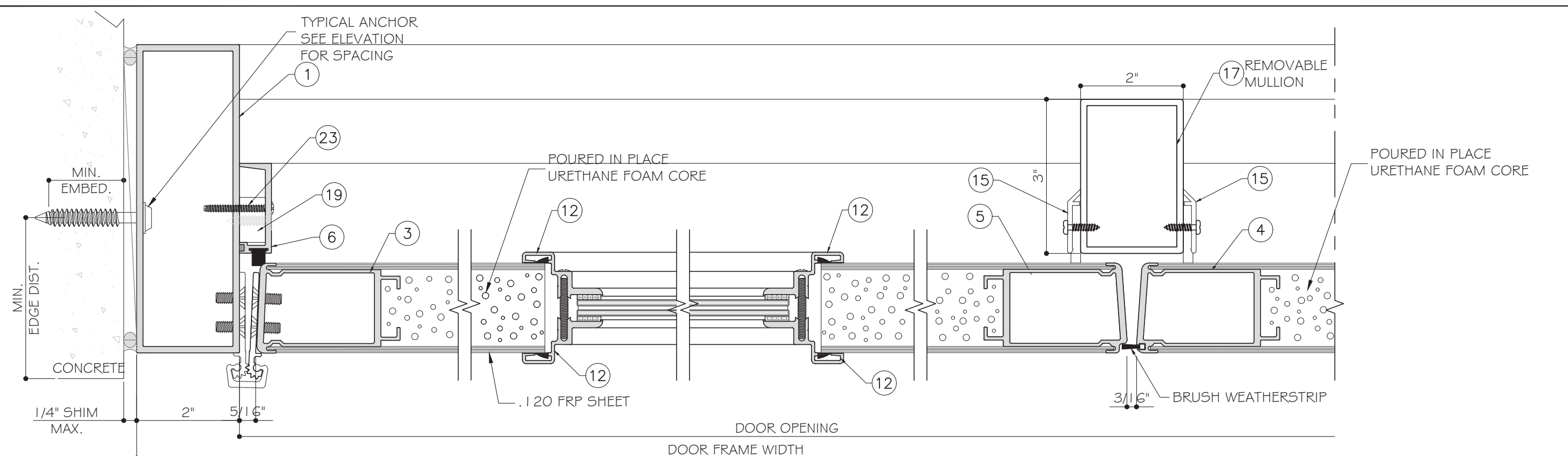
MCY ENGINEERING, INC.
 GLAZING CONSULTANTS
 12781 MIRAMAR PARKWAY #301
 MIRAMAR, FL 33027
 P: 305.271.0117
 www.MCYEngineering.com mcy@mcyengineering.com

ALUMINUM FRAME OUTSWING DOORS
 SPECIAL-LITE, INC.
 860 SOUTH WILLIAMS STREET
 P.O. BOX 6
 DECATUR, MI 49045
 WWW.SPECIAL-LITE.COM



| |
|----------------------|
| AD20-31 |
| DATE: 08.11.23 |
| SCALE: AS SHOWN |
| DRAWN: James |
| DRAWING NO.: AD20-31 |

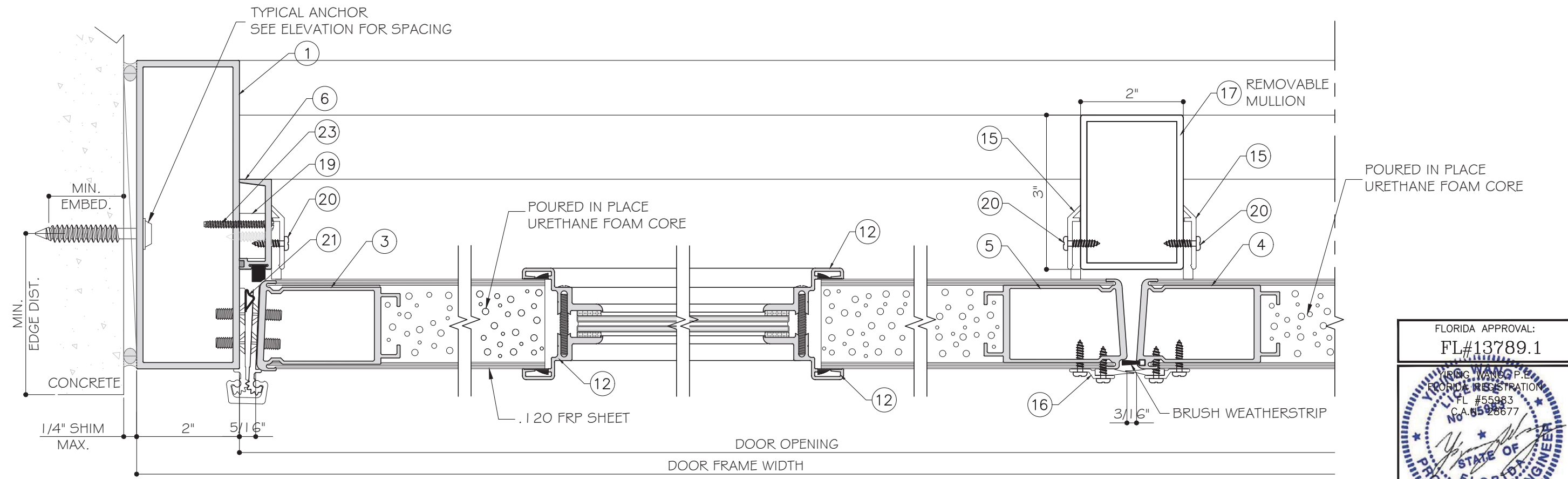
SHEET TITLE
 D1
 3 OF 10



3
D2
DETAIL

4
D2
DETAIL

5
D2
DETAIL



3
D2
OPTION FOR WATER RESISTANT

5
D2
OPTION FOR WATER RESISTANT

5
D2
OPTION FOR WATER RESISTANT

FLORIDA APPROVAL:
FL#13789.1

YONG WANG, P.E.
FLORIDA REGISTRATION
FL #55983
C.A. 85987

August 11th, 2023

| NO. | DATE | DESCRIPTION |
|-----|----------|-------------|
| R3 | 08.11.23 | 2023 FBC |

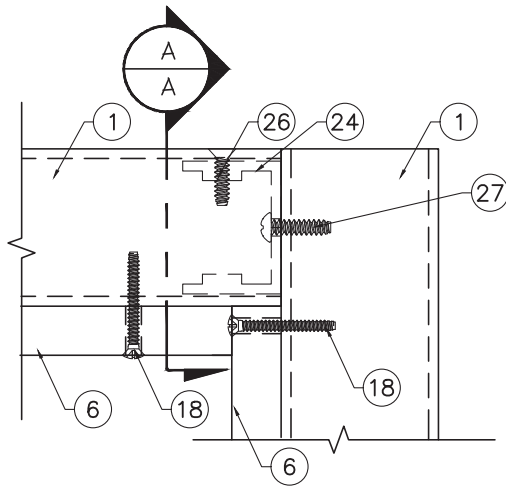
MCY ENGINEERING, INC.
GLAZING CONSULTANTS
12781 MIRAMAR PARKWAY #301
MIRAMAR, FL 33027
www.MCYEngineering.com P: 305.271.0117
mcy@mcyengineering.com

ALUMINUM FRAME OUTSWING DOORS
SPECIAL-LITE, INC.
860 SOUTH WILLIAMS STREET
P.O. BOX 6
DECATUR, MI 49045
WWW.SPECIAL-LITE.COM

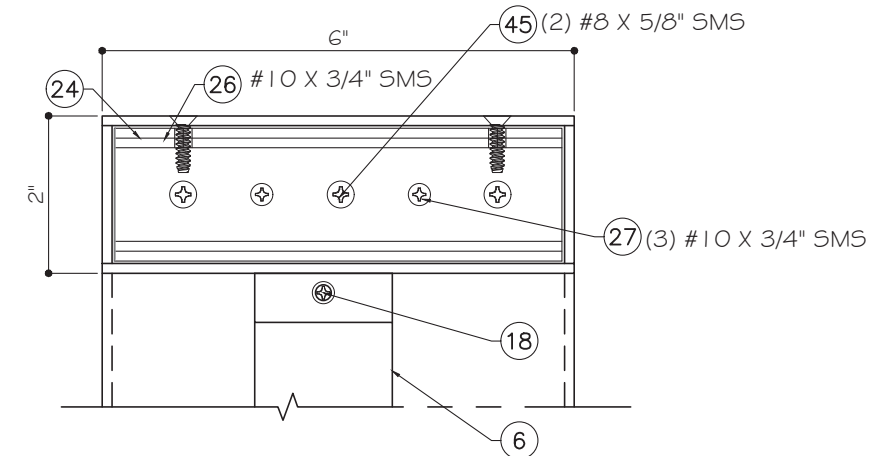


| |
|----------------------|
| AD20-31 |
| DATE: 08.11.23 |
| SCALE: AS SHOWN |
| DRAWN: James |
| DRAWING NO.: AD20-31 |

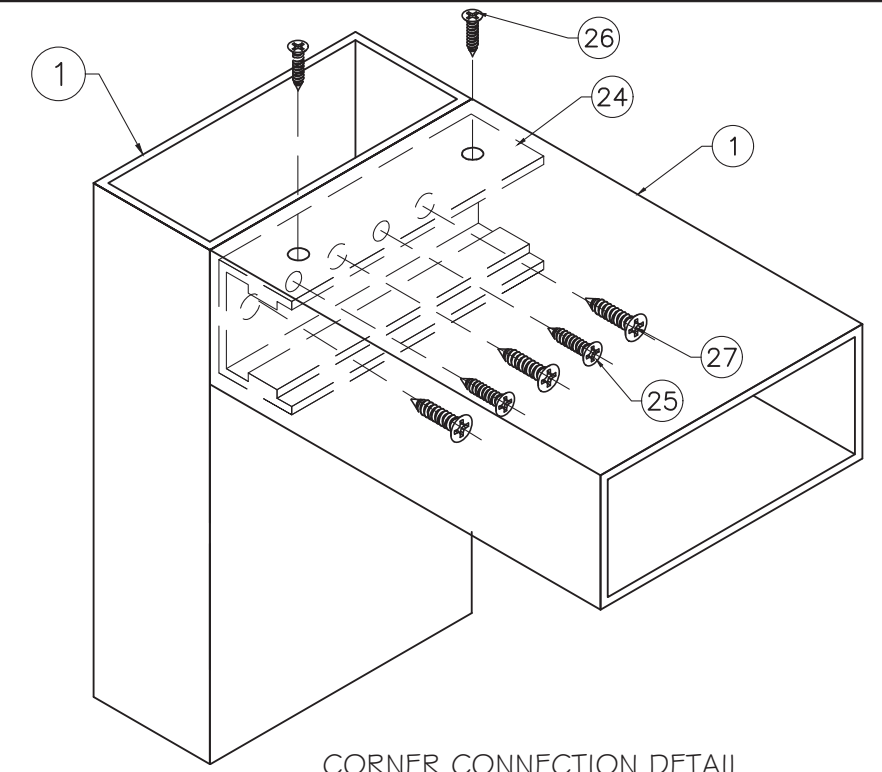
SHEET TITLE
D2
4 OF 10



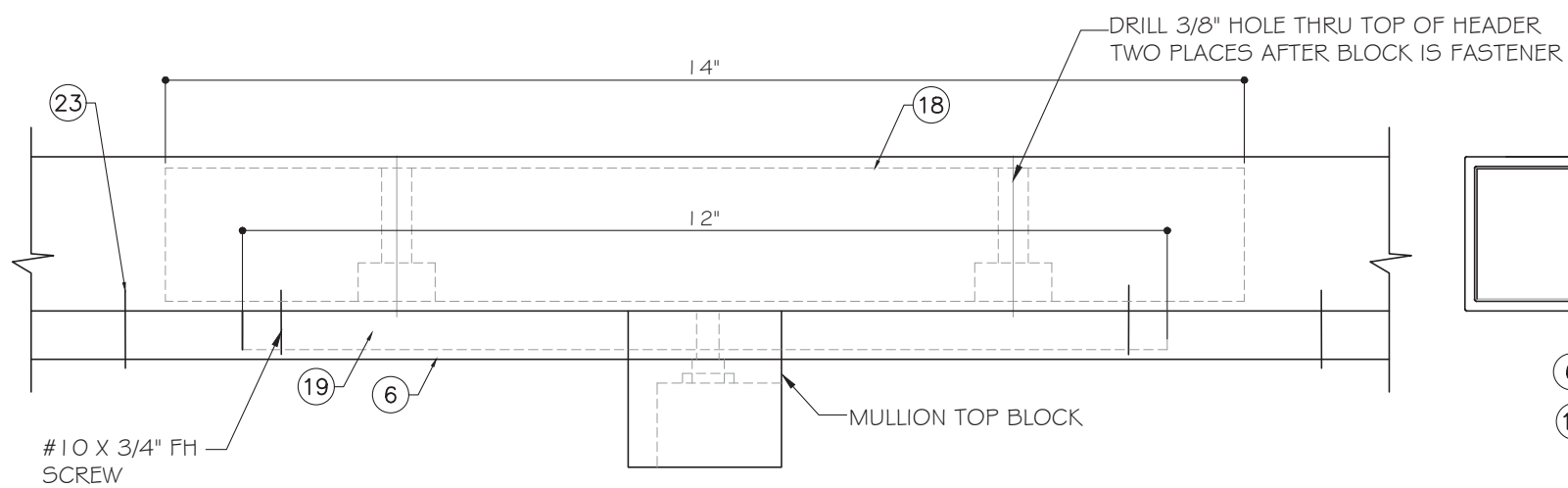
9 T-5-CORNER DETAIL
D4



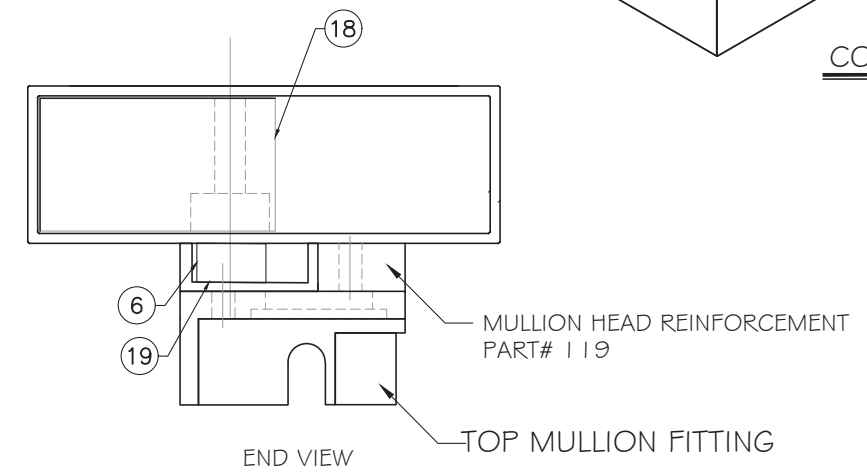
SECTION A-A



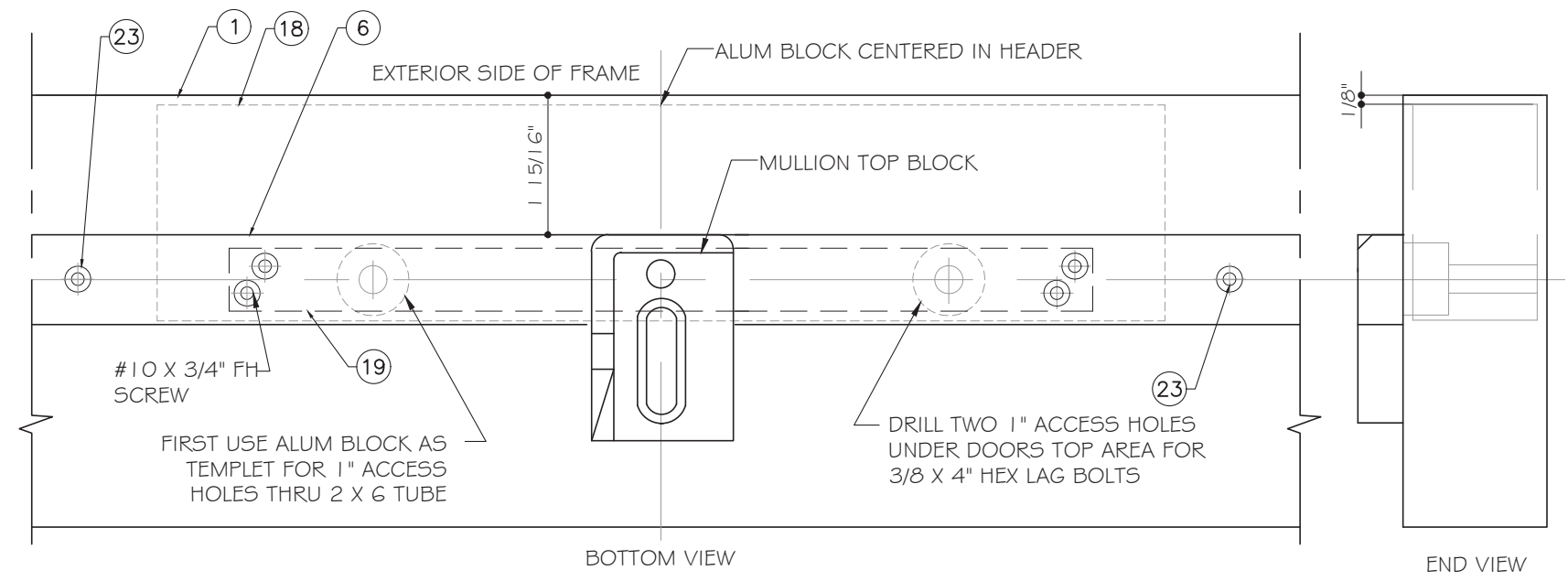
CORNER CONNECTION DETAIL



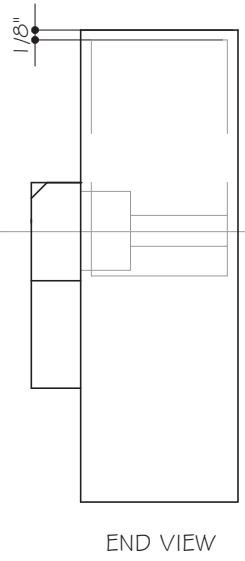
SECTION B-B



END VIEW



BOTTOM VIEW



END VIEW

| REVISIONS | NO. | DATE | DESCRIPTION |
|-----------|-----|----------|-------------|
| | R3 | 08.11.23 | 2023 FBC |

MCY ENGINEERING, INC.
GLAZING CONSULTANTS
12781 MIRAMAR PARKWAY #301
MIRAMAR, FL 33027
P: 305.271.0117
www.MCYEngineering.com mcy@mcyengineering.com

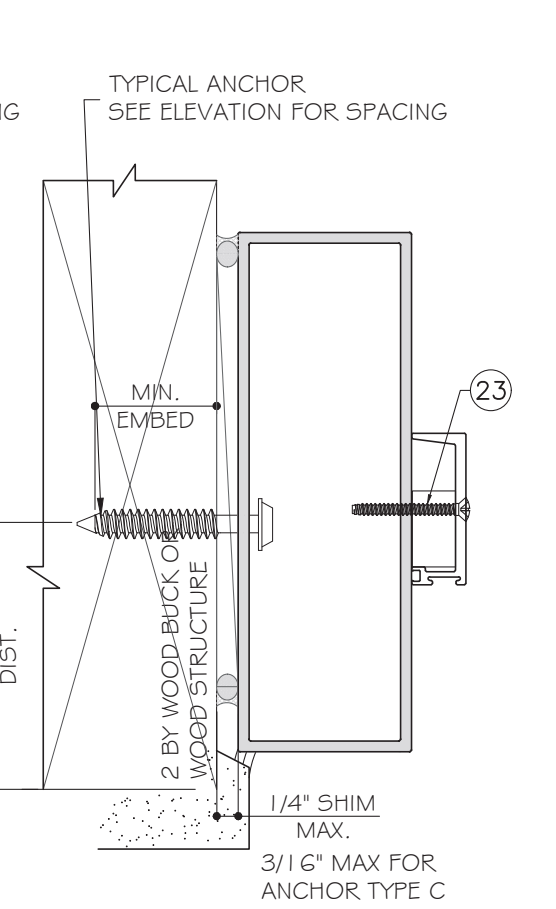
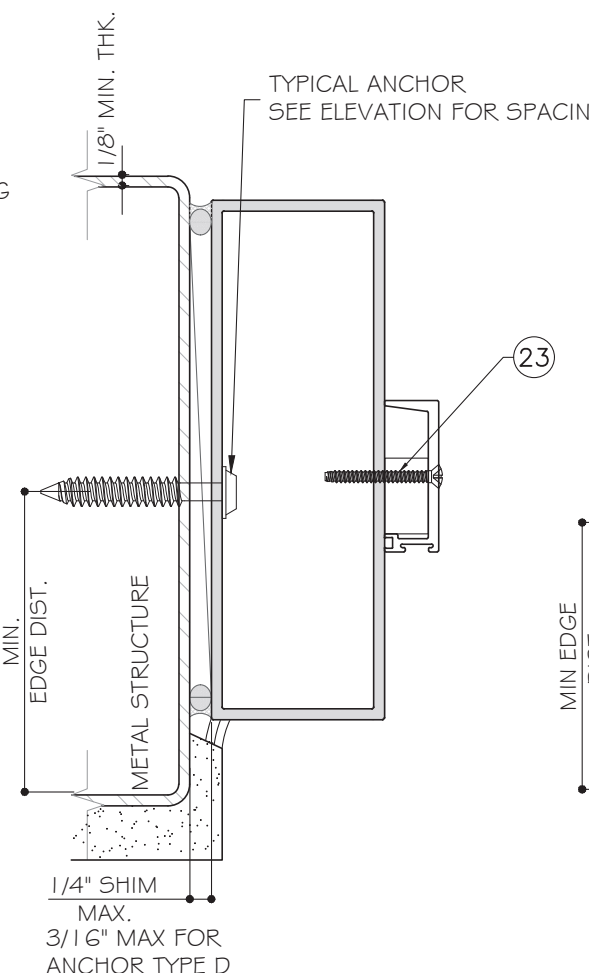
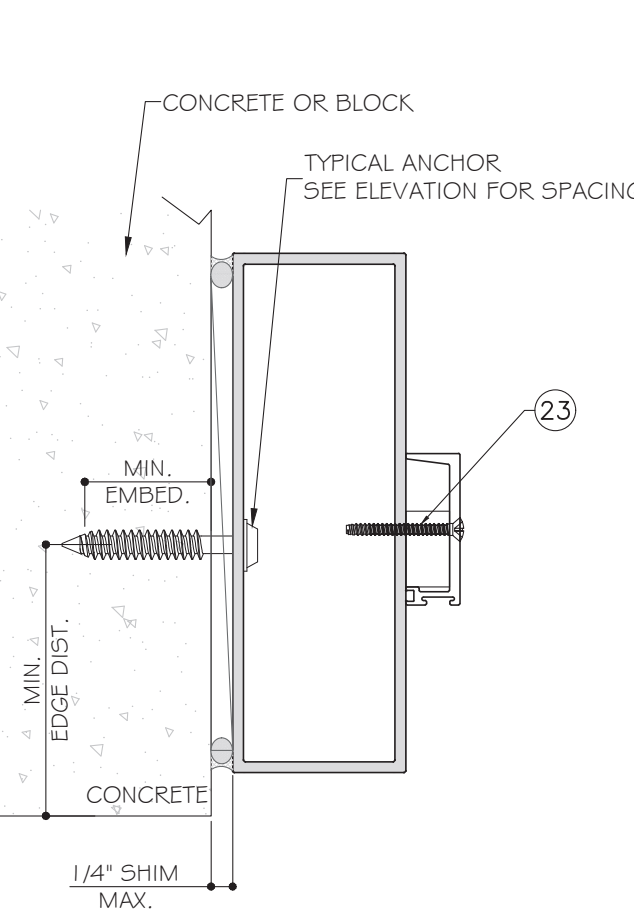
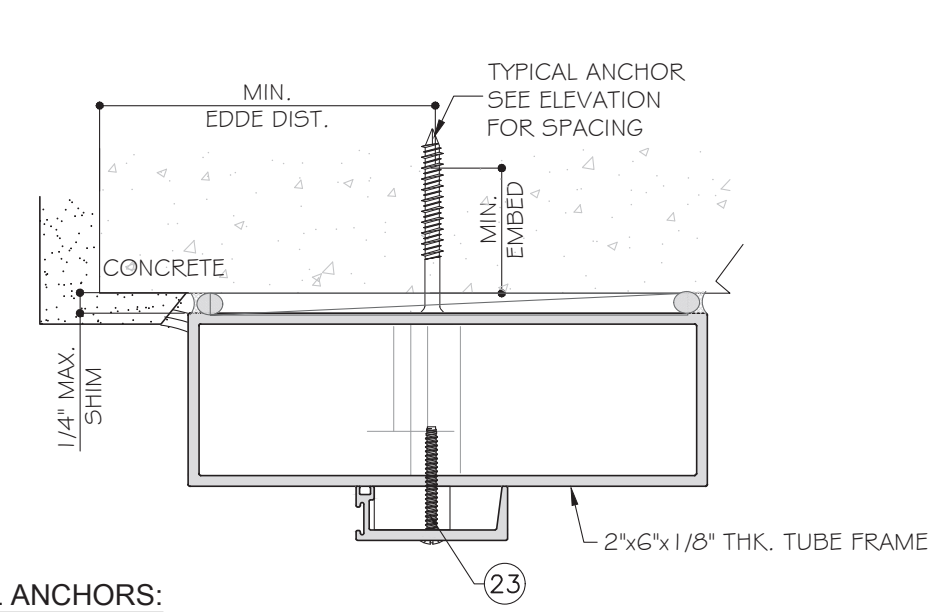
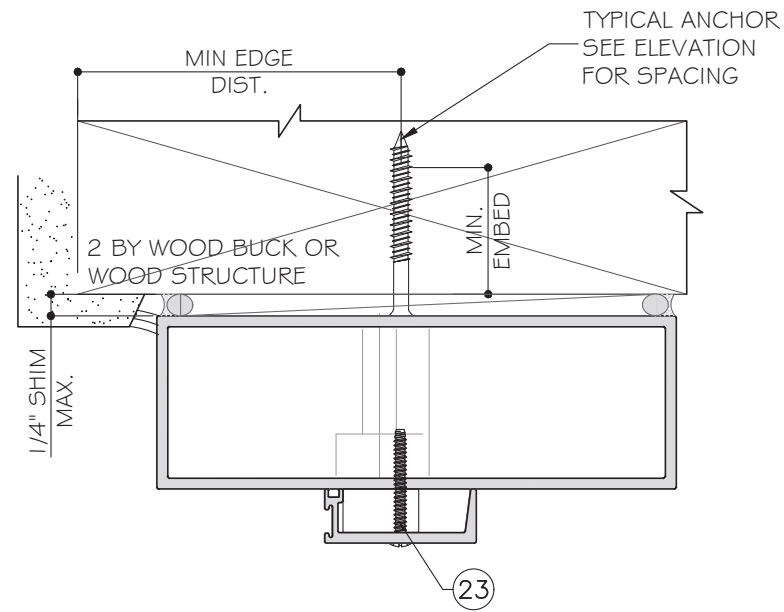
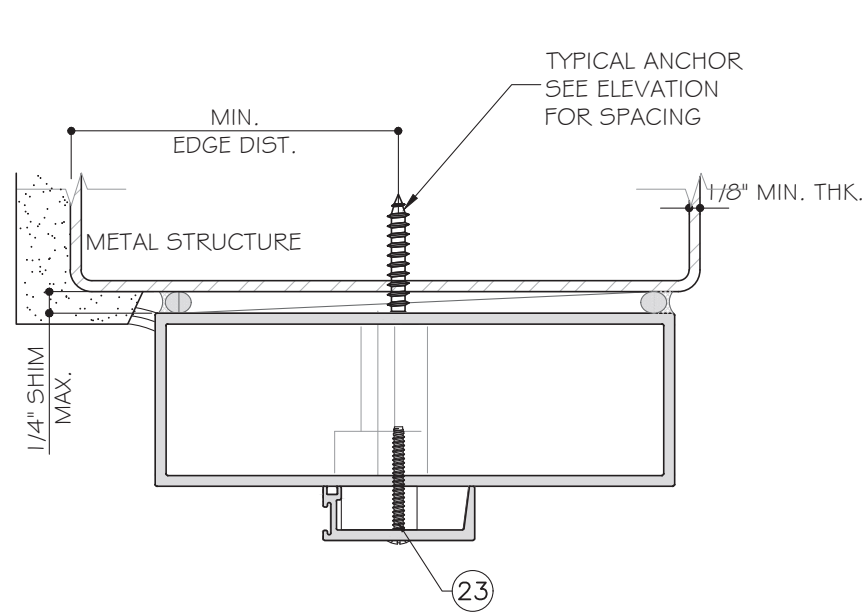
ALUMINUM FRAME OUTSWING DOORS
SPECIAL-LITE, INC.
860 SOUTH WILLIAMS STREET
P.O. BOX 6
DECATUR, MI 49045
WWW.SPECIAL-LITE.COM



FLORIDA APPROVAL:
FL#13789.1
YING WANG, P.E.
FLORIDA REGISTRATION
FL #55983
CA. 85983
August 11th, 2023

| |
|----------------------|
| AD20-31 |
| DATE: 08.11.23 |
| SCALE: AS SHOWN |
| DRAWN: James |
| DRAWING NO.: AD20-31 |

SHEET TITLE
D4
6 OF 10



TYPICAL ANCHORS:

ANCHOR AT JAMB

TYPE 'A' - 1/4" DIA. ITW TAPCON (Fu= 120 KSI, Fy=92 KSI)
 W/ 1 1/4" MIN. EMBED INTO MEDIUM WEIGHT CMU BLOCK
 2 1/2" MIN. EDGE DISTANCE.

TYPE 'B' - 1/4" POWERS TAPPER+ (Fu= 177 KSI, Fy= 155 KSI)
 W/ 1 1/4" MIN. EMBED INTO CONCRETE
 2 1/2" MIN. EDGE DISTANCE.

OR 1 1/2" MIN EMBED INTO LIGHTWEIGHT GROUT FILLED CONCRETE MASONRY
 3" MIN. EDGE DISTANCE

TYPE 'C' - #12 WOOD SCREW, (3/16" MAX SHIM)
 1 1/2" EMBED INTO WOOD, G=0.55 MIN
 1" MIN. EDGE DISTANCE

TYPE 'D' - #12 SMS OR TEKS SELF DRILLING SCREW (3/16" MAX SHIM)
 INTO METAL STRUCTURE 1/8" MIN. THK. (6063-T5)

ANCHOR AT HEAD

TYPE 'E' - 3/8" LAG BOLT SCREW (Fy = 60 KSI)
 WITH 1 1/2" EMBED INTO WOOD, G=0.55 MIN
 1 1/2" MIN. EDGE DISTANCE

TYPE 'F' - 3/8" HILTI HUS- HR AND HUS-CR
 2 3/4" MIN EMBED INTO CONCRETE (FC'=3000 PSI)
 2 1/2" MIN. EDGE DISTANCE.

TYPE 'G' - 3/8" TEKS SCREW
 INTO 1/4" MIN. THK. ALUMINUM STRUCTURE (MIN. 6063-T5)
 1" MIN. EDGE DIST.

ANCHOR AT SILL

TYPE 'H' - 5/16" DIA. DEWALT ULTRACON (Fu= 177 KSI, Fy= 155 KSI)
 1-3/4" MIN. EMBED INTO CONCRETE
 2 1/2" MIN. EDGE DISTANCE.

FLORIDA APPROVAL:
FL#13789.1
 YING WANG, P.E.
 FLORIDA REGISTRATION
 FL #55983
 CA. 85982
 August 11th, 2023

| NO. | DATE | DESCRIPTION |
|-----|----------|-------------|
| R3 | 08.11.23 | 2023 FBC |

MCY ENGINEERING, INC.
 GLAZING CONSULTANTS
 12781 MIRAMAR PARKWAY #301
 MIRAMAR, FL 33027
 P: 305.271.0117
 www.MCYEngineering.com mcy@mcyengineering.com

ALUMINUM FRAME OUTSWINGING DOORS
 SPECIAL-LITE, INC.
 860 SOUTH WILLIAMS STREET
 P.O. BOX 6
 DECATUR, MI 49045
 WWW.SPECIAL-LITE.COM

Special-Lite
Doors with more life.

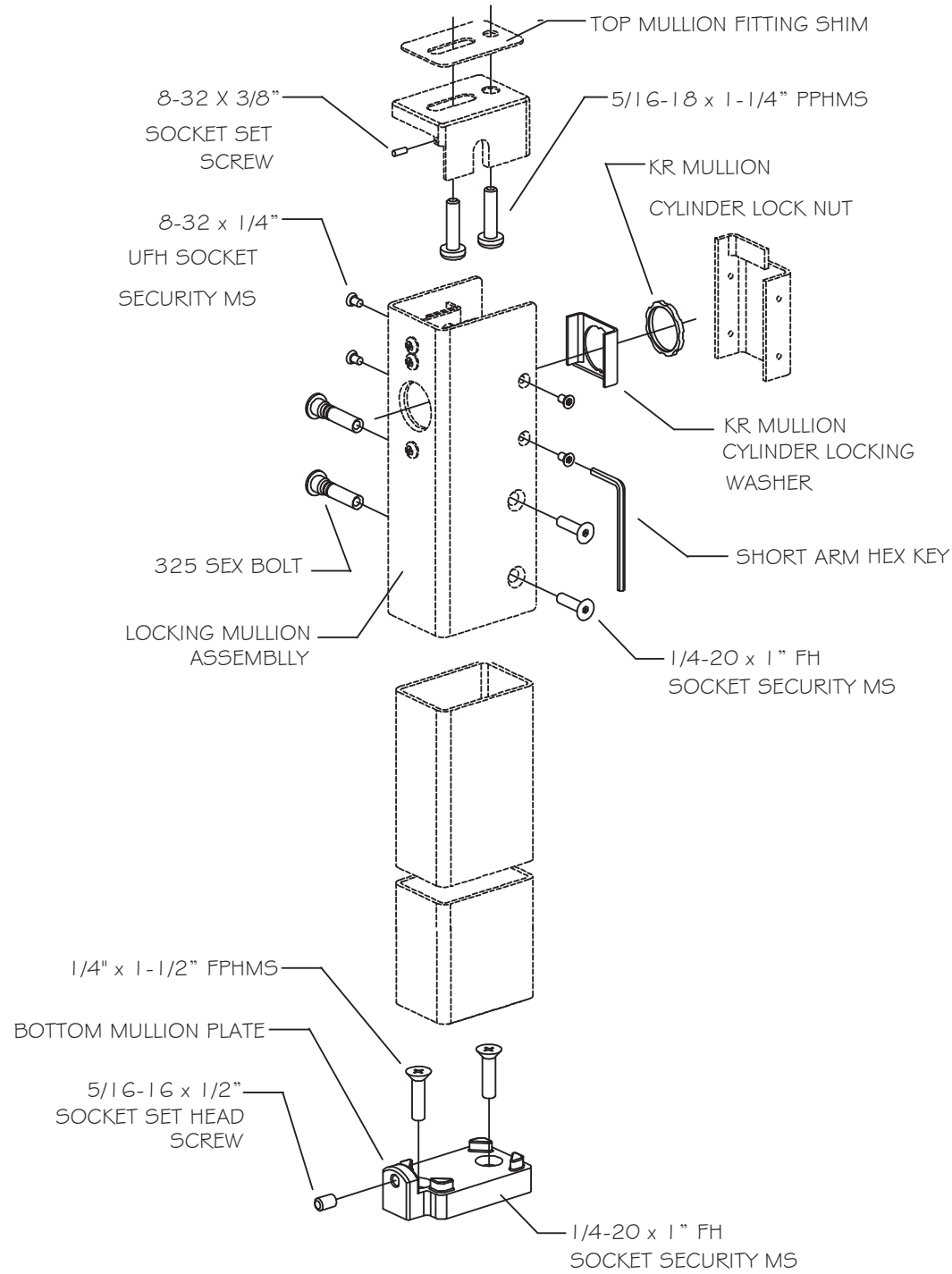
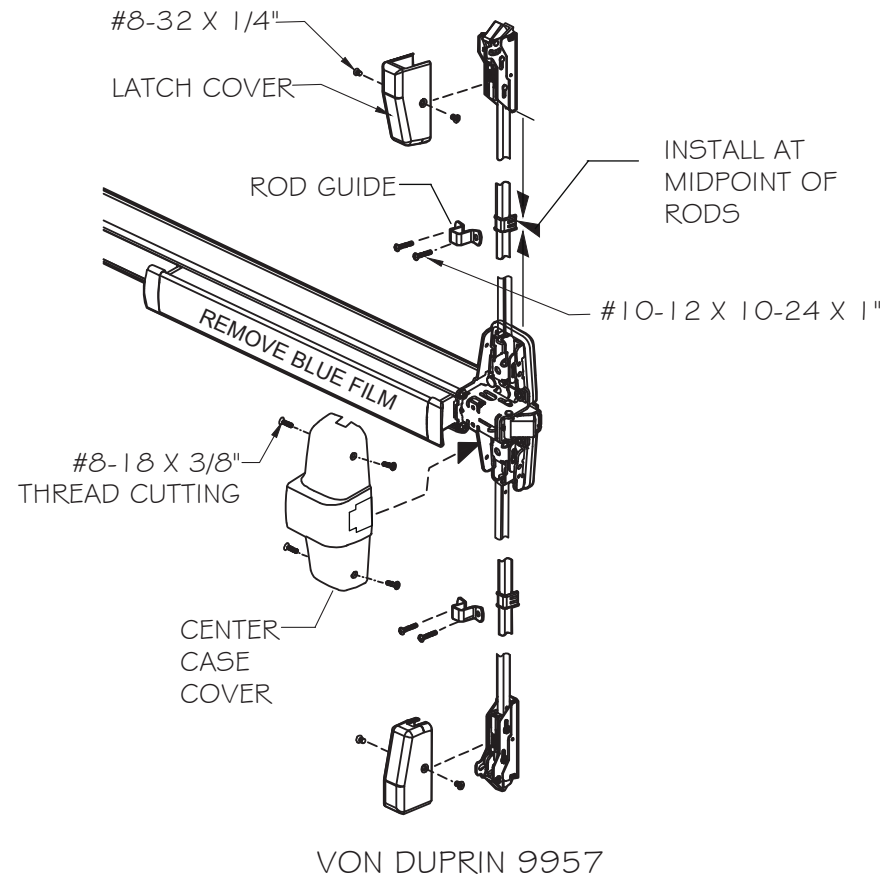
| | |
|-------------|----------|
| DATE | 08.11.23 |
| SCALE | AS SHOWN |
| DRAWN | James |
| DRAWING NO. | AD20-31 |

SHEET TITLE
A1

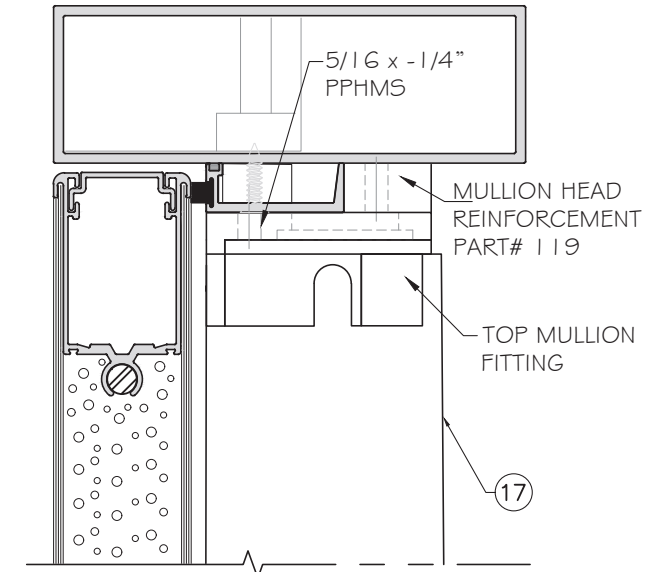
HARDWARE:

- LOCK
ACTIVE PANEL: VON DUPRIN 9957 3 POINT LOCK W/ ACTIVATING PANIC DEVICE, VERTICAL RODS AT TOP AND BOTTOM, 40" FROM BOTTOM. WHICH LATCHES AT HEAD AND THE SILL AND ON THE MULLION.

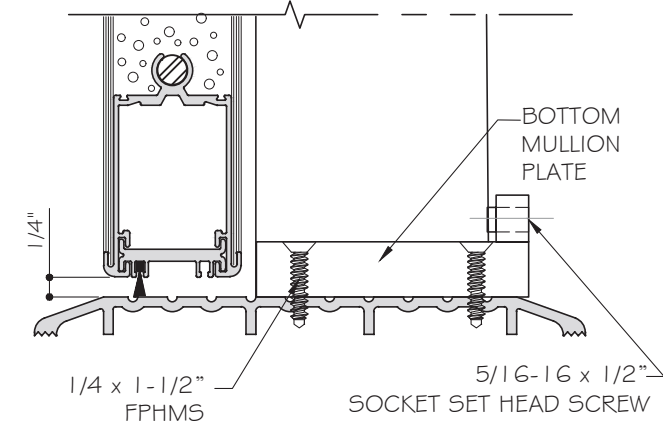
- MULLION: 4954 VON DUPRIN REMOVABLE MULLION AT MID SPAN ATTACHED TO FRAME HEAD USING A TWO PIECE METALLIC BRACKET W/ (2) 5/16" X 1- 1/4" INTO THE MULLION. FASTENED TO THRESHOLD W/ (2) 1/4" X 4 FH SCREWS.



4954 REMOVABLE MULLION



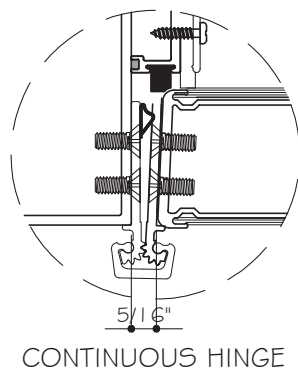
4954 REMOVABLE MULLION TOP CONNECTION



4954 REMOVABLE MULLION BOTTOM CONNECTION

HINGE OPTIONS

CONTINUOUS HINGE ATTCHED WITH #10-24 FH SCREW AT 1" AND 3" FROM EACH ENDS AND 12" O.C.



CONTINUOUS HINGE

| REVISIONS | NO. | DATE | DESCRIPTION |
|-----------|-----|----------|-------------|
| | R3 | 08.11.23 | 2023 FBC |

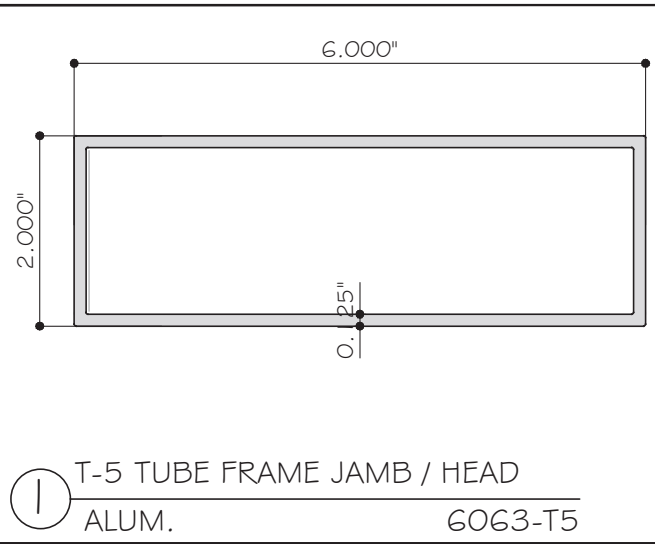
MCY ENGINEERING, INC.
GLAZING CONSULTANTS
12781 MIRAMAR PARKWAY #301
MIRAMAR, FL 33027
P: 305.271.0117
www.MCYEngineering.com mcy@mcyengineering.com

ALUMINUM FRAME OUTSWINGING DOORS
SPECIAL-LITE, INC.
860 SOUTH WILLIAMS STREET
P.O. BOX 6
DECATUR, MI 49045
WWW.SPECIAL-LITE.COM

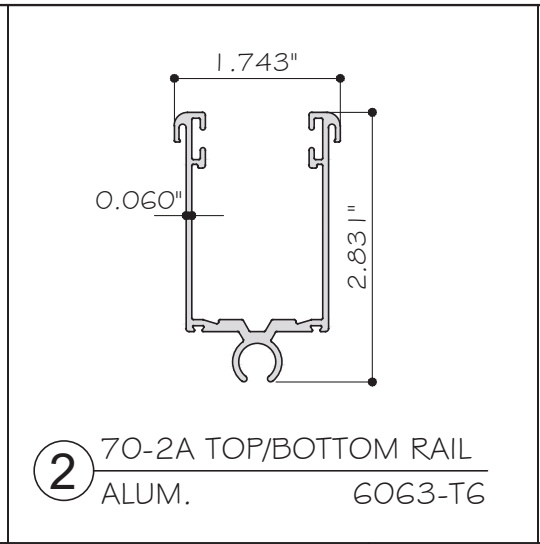


FLORIDA APPROVAL:
FL#13789.1
YING WANG, P.E.
FLORIDA REGISTRATION
FL #55983
C.A. #28677
August 11th, 2023

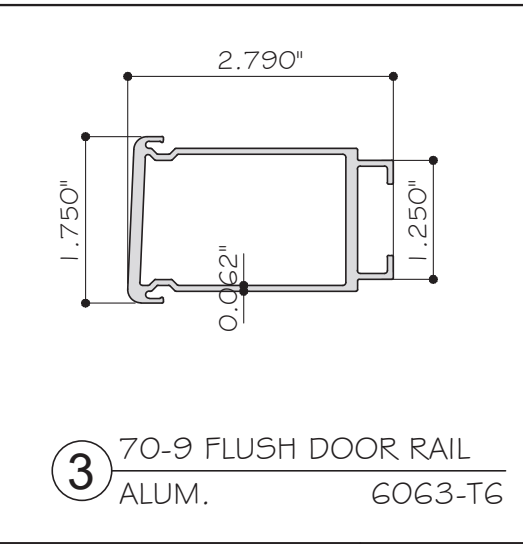
| |
|----------------------|
| AD20-31 |
| DATE: 08.11.23 |
| SCALE: AS SHOWN |
| DRAWN: James |
| DRAWING NO.: AD20-31 |
| SHEET TITLE: HW1 |
| 8 OF 10 |



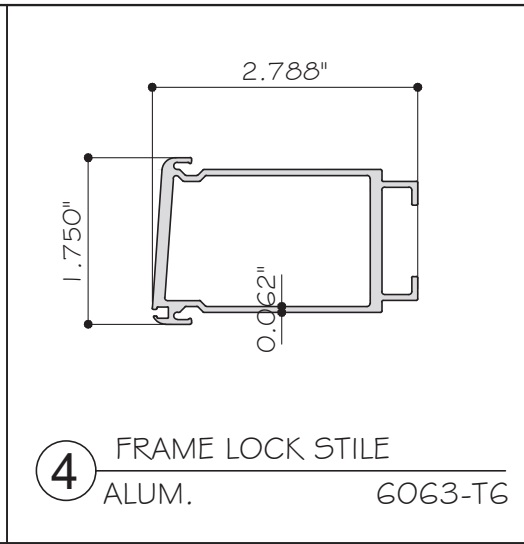
① T-5 TUBE FRAME JAMB / HEAD
ALUM. 6063-T5



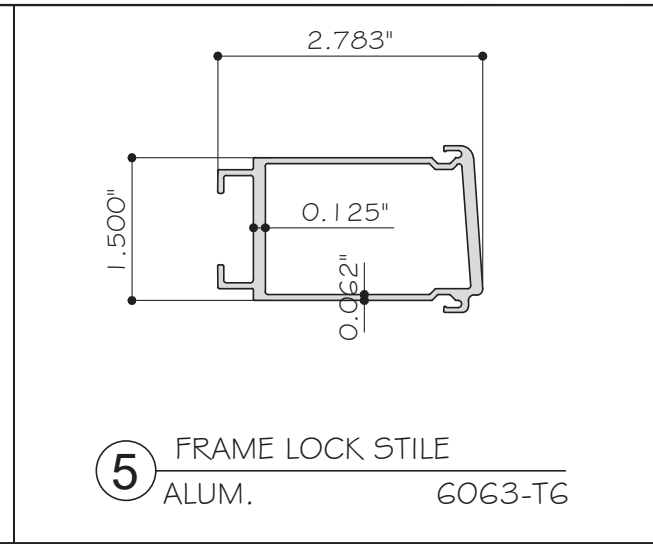
② 70-2A TOP/BOTTOM RAIL
ALUM. 6063-T6



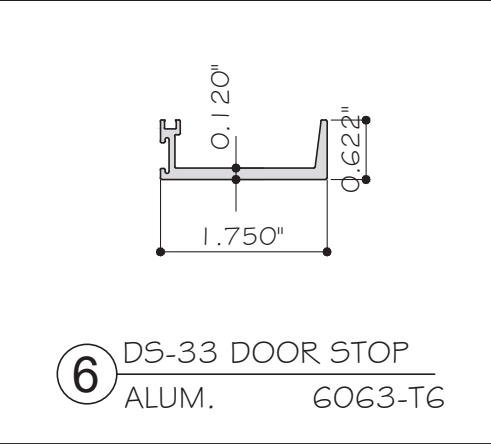
③ 70-9 FLUSH DOOR RAIL
ALUM. 6063-T6



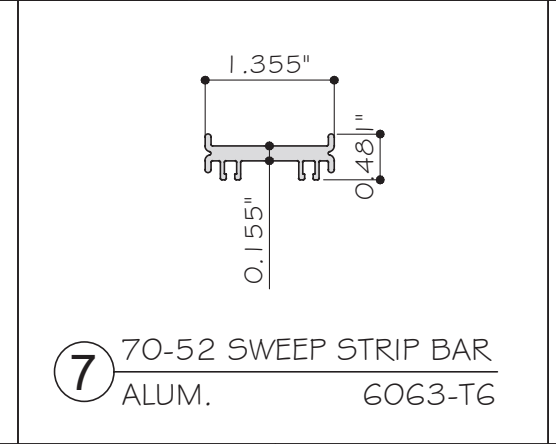
④ FRAME LOCK STILE
ALUM. 6063-T6



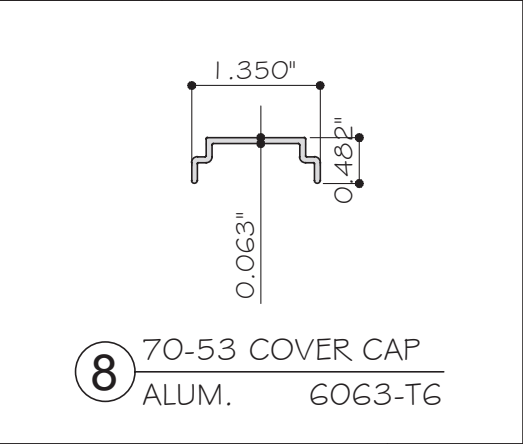
⑤ FRAME LOCK STILE
ALUM. 6063-T6



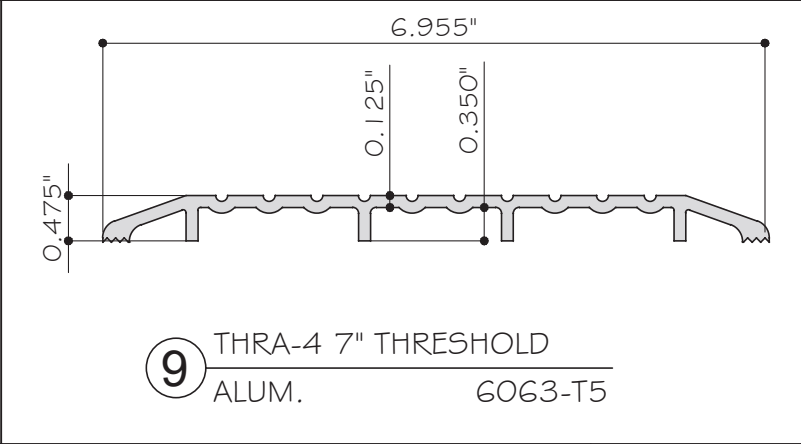
⑥ DS-33 DOOR STOP
ALUM. 6063-T6



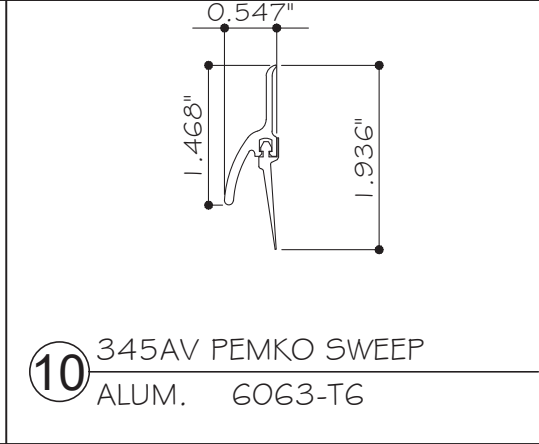
⑦ 70-52 SWEEP STRIP BAR
ALUM. 6063-T6



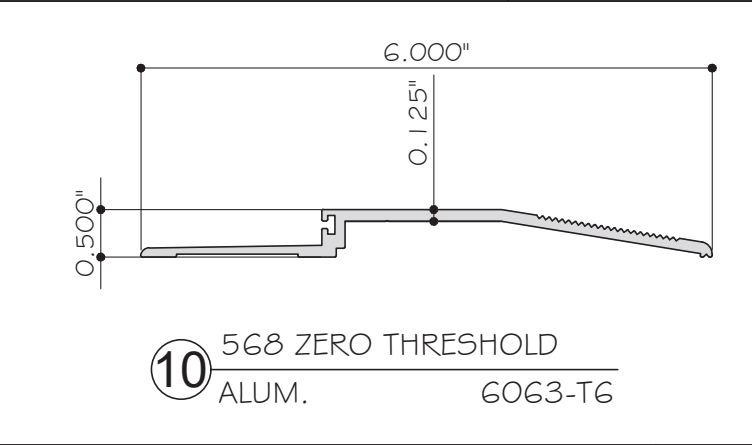
⑧ 70-53 COVER CAP
ALUM. 6063-T6



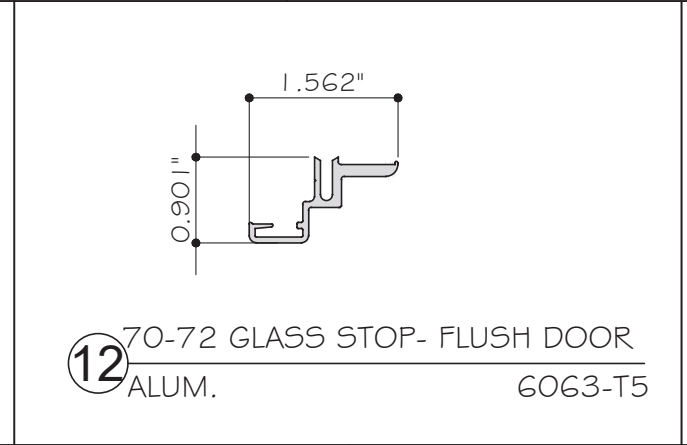
⑨ THRA-4 7" THRESHOLD
ALUM. 6063-T5



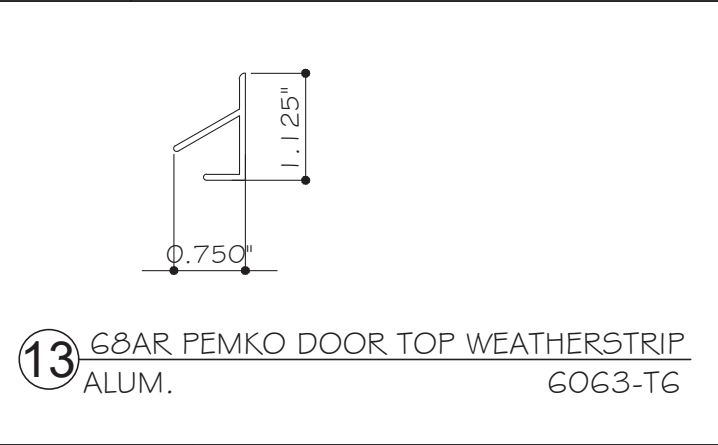
⑩ 345AV PEMKO SWEEP
ALUM. 6063-T6



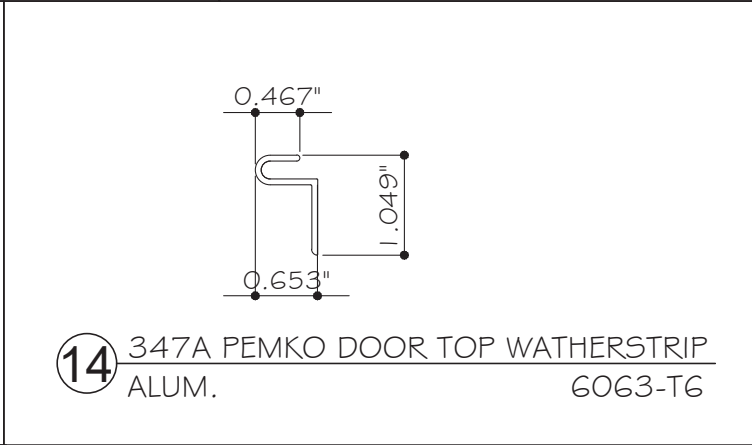
⑩ 568 ZERO THRESHOLD
ALUM. 6063-T6



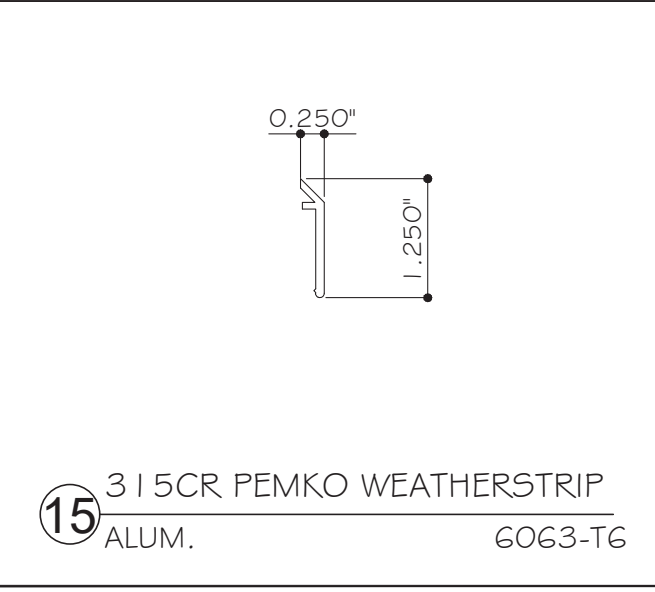
⑫ 70-72 GLASS STOP- FLUSH DOOR
ALUM. 6063-T5



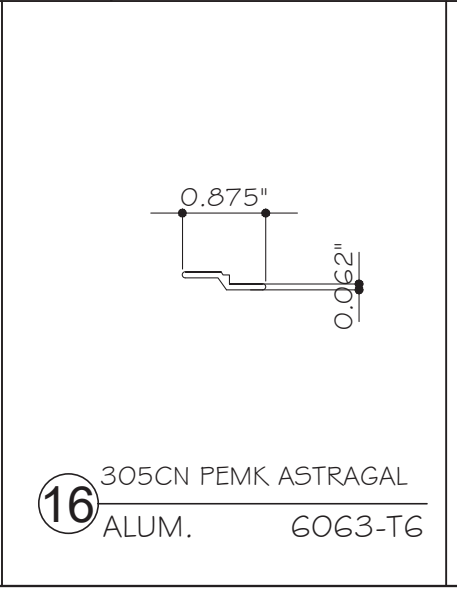
⑬ 68AR PEMKO DOOR TOP WEATHERSTRIP
ALUM. 6063-T6



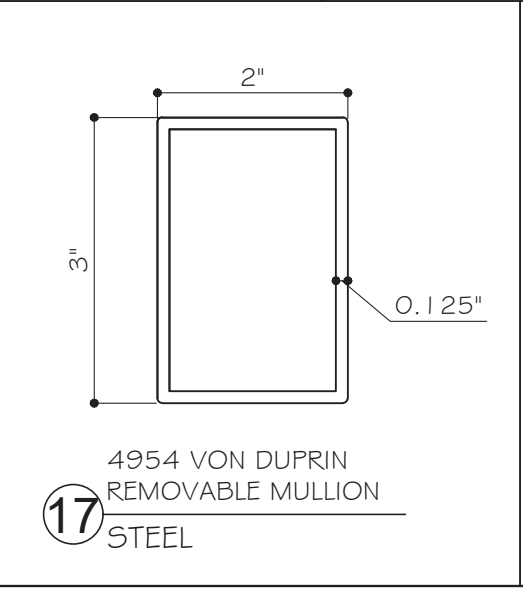
⑭ 347A PEMKO DOOR TOP WATHERSTRIP
ALUM. 6063-T6



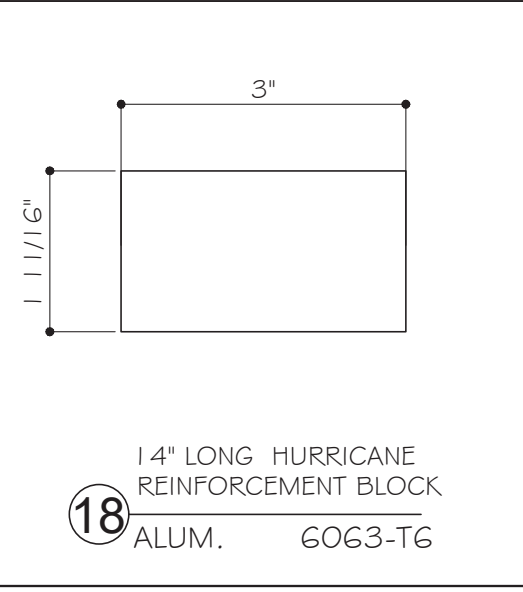
⑮ 3 I 5CR PEMKO WEATHERSTRIP
ALUM. 6063-T6



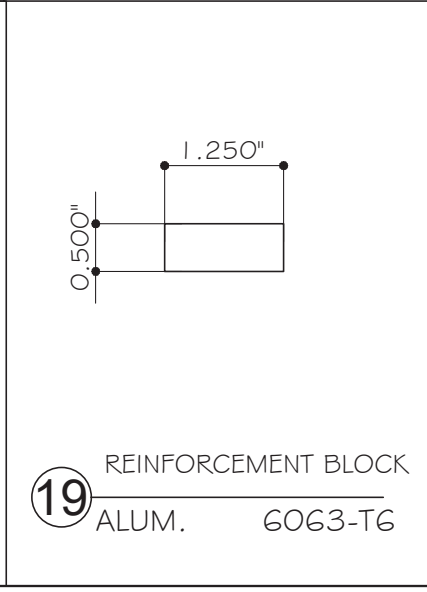
⑯ 305CN PEMK ASTRAGAL
ALUM. 6063-T6



⑰ 4954 VON DUPRIN REMOVABLE MULLION
STEEL



⑱ 14" LONG HURRICANE REINFORCEMENT BLOCK
ALUM. 6063-T6



⑲ REINFORCEMENT BLOCK
ALUM. 6063-T6

FLORIDA APPROVAL:
FL#13789.1

YING WANG, P.E.
FLORIDA REGISTRATION
FL #55983
C.A. 85982

August 11th, 2023

| NO. | DATE | DESCRIPTION |
|-----|----------|-------------|
| R3 | 08.11.23 | 2023 FBC |

MCY ENGINEERING, INC.
GLAZING CONSULTANTS

12781 MIRAMAR PARKWAY #301
MIRAMAR, FL 33027

P: 305.271.0117
www.MCYEngineering.com mcy@mcyengineering.com

ALUMINUM FRAME OUTSWING DOORS

SPECIAL-LITE, INC.
860 SOUTH WILLIAMS STREET
P.O. BOX 6
DECATUR, MI 49045
WWW.SPECIAL-LITE.COM



| |
|----------------------|
| AD20-31 |
| DATE: 08.11.23 |
| SCALE: AS SHOWN |
| DRAWN: James |
| DRAWING NO.: AD20-31 |
| SHEET TITLE: PARTS |
| 9 OF 10 |

BILL OF MATERIALS

| ITEM | PART | DESCRIPTION | MATERIAL | MANUFACTURER / REMARKS |
|------|----------|--|---------------|------------------------|
| 1 | T-5 | 2" X 4.5" CLASS 1 ANODIZED ALUMINUM HEAD/JAMB FRAME | ALUM. 6063-T5 | SPECIAL-LITE, INC. |
| 2 | 70-2A | TOP/BOTTOM RAIL | ALUM. 6063-T6 | SPECIAL-LITE, INC. |
| 3 | 70-9 | FLUSH DOOR RAIL | ALUM. 6063-T6 | SPECIAL-LITE, INC. |
| 4 | - | LOCK STILE | ALUM. 6063-T6 | SPECIAL-LITE, INC. |
| 5 | - | LOCK STILE | ALUM. 6063-T6 | SPECIAL-LITE, INC. |
| 6 | DS-33 | DOOR STOP | ALUM. 6063-T6 | SPECIAL-LITE, INC. |
| 7 | 70-52 | SWEEP STRIP BAR | ALUM. 6063-T6 | SPECIAL-LITE, INC. |
| 8 | 70-53 | COVER CAP | ALUM. 6063-T6 | SPECIAL-LITE, INC. |
| 9 | THRS-4 | 7" THRESHOLD | ALUM. 6063-T5 | SPECIAL-LITE, INC. |
| 10 | 345AV | PEMKO SWEEP | ALUM. 6063-T6 | PEMKO |
| 11 | 578 ZERO | THRESHOLD | ALUM. 6063-T6 | ZERO INTERNATIONAL |
| 12 | 70-72 | GLASS STOP | ALUM. 6063-T5 | SPECIAL-LITE, INC. |
| 13 | 347 | PEMKO DOOR TOP WEATHERSTRIP | ALUM. 6063-T6 | PEMKO |
| 14 | 347A | PEMKO DOOR TOP WEATHERSTRIP | ALUM. 6063-T6 | PEMKO |
| 15 | 115 CR | PEMKO WEATHERSTRIP | ALUM. 6063-T6 | PEMKO |
| 16 | 305CN | PEMKO ASTRAGAL | ALUM. 6063-T6 | PEMKO |
| 17 | 4954 | VON DUPRIN REMOVABLE MULLION | STEEL | VON DUPRIN. |
| 18 | - | 14" LONG HURRICANE REINFORCEMENT BLOCK | ALUM. 6063-T6 | SPECIAL-LITE, INC. |
| 19 | - | REINFORCEMENT BLOCK (1 1/4" X 1/2") | ALUM. 6063-T6 | SPECIAL-LITE, INC. |
| 20 | - | #10x3/4" SCREWS , (2) PER ENDS AT 5" FROM EACH END | ST/ST | VARIES |
| 21 | 488 | ZERO SMOKE SEAL | - | ZERO INTERNATIONAL |
| 22 | - | NYLON BRUSH WEATHERSTRIP | NYLON | - |
| 23 | - | #8 X 1-1/4" OH SMS - 4" MAX. FROM END # 16" MAX. O.C. | ST/ST | VARIES |
| 24 | RE-8 | FRAME CORNER CLIP | ALUM. 6063-T5 | SPECIAL-LITE, INC. |
| 25 | SC-12 | 8-15 x 5/8" PHILLIPS PAN HEAD ZINC | STEEL | - |
| 26 | SC-23 | 10-16 x 3/4" PHILLIPS U/C FLAT HEAD CLR | STEEL | - |
| 27 | SC-25 | 10-16 x 3/4" PHILLIPS TRUSS HEAD CLR | STEEL | - |
| 28 | - | #8 X 1-3/8" SMS (4-5/8" MAX. FROM END # 8" MAX. O.C.) | ST/ST | VARIES |

| REVISONS | DESCRIPTION |
|-------------|-------------|
| NO. DATE | DESCRIPTION |
| R3 08.11.23 | 2023 FBC |

MCY ENGINEERING, INC.
GLAZING CONSULTANTS

12781 MIRAMAR PARKWAY #301
MIRAMAR, FL 33027 P: 305.271.0117
www.MCYEngineering.com mcy@mcyengineering.com

ALUMINUM FRAME OUTSWING DOORS

SPECIAL-LITE, INC.
860 SOUTH WILLIAMS STREET
P.O. BOX 6
DECATUR, MI 49045
WWW.SPECIAL-LITE.COM

FLORIDA APPROVAL:
FL#13789.1

YING WANG, P.E.
FLORIDA REGISTRATION
FL #55983
C.A. #28677

August 11th, 2023

| | |
|-------------|----------|
| AD20-31 | |
| DATE | 08.11.23 |
| SCALE | AS SHOWN |
| DRAWN | James |
| DRAWING NO. | AD20-31 |
| SHEET TITLE | |
| BOM | |
| 10 OF 10 | |